



# ROHLINGER ENTERPRISES

I N C O R P O R A T E D

P.O. Box 1340 • 18832 Division Ave NE • Suquamish, WA 98392

360.598.4287

360.598.6166 Fax

206.232.5485 Seattle

Email: [sales@rohlinger.com](mailto:sales@rohlinger.com)

Web: <http://www.rohlinger.com>

## Your Full-Line Utility Tool Repair, Line Equipment and Dielectric Testing Facility

### Dielectric Testing:

- Blankets • Barriers (Hard Cover-up) • Hoods • Hot Sticks • Line Hose • Rubber High & Low Voltage Gloves • Sleeves • Voltage Detectors

### Tool Repair:

- Barriers (Hard Cover-up) • Banding Tools • Bolt Cutters • Electric Hand Tools
- Fish Tapes / Rodders • Gas Drills • Gas Saws • Gas Tampers • Ground Cables
- Hot Jumper Cables • Hot Sticks (Complete repair & refinishing) • Hydraulic Cutters • Hydraulic Hand Tools • Hydraulic Jacks • Hydraulic Presses • Hydraulic Pumps • Hydraulic Saws • Knock-out Tools • Line Stringing Equipment • Load Break Tools • Manual Cutters • Manual Presses (MD6 etc.) • Pavement Breakers • Phasing Testers
- Pole Tampers • Strap & Chain Hoists • Voltage Detectors • Water Pumps • Wire Strippers



### Sales of New and Reconditioned Tools & Equipment:

- Arc Flash Clothing • Barriers (Hard Cover-up) • Canvas Storage Bags • Chain (Load Binder)
- Chain Binders • Compression Tools • Electric Hand Tools • Electro-Shield • Eye Protection
- Face Shields • Fall Arrest Harnesses • Gas Drills • Ground Cables (Custom Built Personal, Elbow, & 3-Phase Sets) • Hard Covers • Hard Hats • High & Low Voltage Rubber Blankets & Storage Containers • High & Low Voltage Rubber Gloves & Accessories • Cover-up Hoods • Hot Jumper Cables (Custom Built) • Hot Sticks (New and Reconditioned) • Hydraulic Cutters
- Hydraulic Hand Tools • Hydraulic Jacks • Hydraulic Presses • Hydraulic Pumps • Hydraulic Saws • Industrial Flash Lights • Insulated Tools • Insulclear • JBRO (Battery Conditioners)
- Labels (Hotstick / Test) • Line Hose • Line Stringing Equipment • Load Break Tools • Manual Cutters • Manual Presses (MD6 etc.) • Nomex / Indura Flame Resistant Clothing • Nylon Slings
- Phasing Testers • Rope (Slings) • Rubber Protective Sleeves • Safety Vests • Strap & Chain Hoists • Switchboard Matting • Voltage Detectors • Water Pumps • Wire Strippers

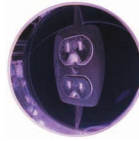
### Manufacturers

- |                              |                             |                                     |
|------------------------------|-----------------------------|-------------------------------------|
| • AB Chance (Hot Line Tools) | • Black & Decker            | • Continental Western (Rope/Slings) |
| • AEG Power Tools            | • Bosch                     | • CTC (Fluke) Voltage Detectors     |
| • Alcoa                      | • Briggs & Stratton         | • DeWalt                            |
| • Aldan Industries           | • Brock                     | • Dillon (Dynamometers)             |
| • Altec Industries           | • Buckingham                | • Duff Norton (Coffing Hoist)       |
| • American Safety            | • Bulwark (Redcap Clothing) | • Echo                              |
| • Anderson                   | • Burndy                    | • Enerpac                           |
| • Aqua-Tronics               | • Chicago Pneumatic         | • Ensley                            |
| • Band-it                    | • CIP Insulated Tools       | • Estex (Canvas Products)           |
| • Bashlin                    | • CM Hoists                 | • Fairmont                          |
| • Beebe (Hoists)             | • C.C. Tools                | • Fulton Lights                     |
| • Bethea                     | • Condux                    | • Furseweld                         |





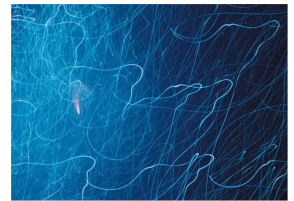
- Greenlee
- Hastings Fiberglass
- HD Electric
- Hilti
- HK Porter
- Honda
- Hubbell Power Systems
- Huskie Tools
- Ingersol-Rand
- Izumi
- Jameson
- Jepson
- Kearney
- Kellums (Grips)
- Knopp, Inc.
- Kunz Glove Co.
- Little Mule Hoists
- Lug-All Hoists
- Makita
- Milwaukee
- New Draulics Tools
- Nupla Corporation
- Olympic Synthetics
- Paulson Manufacturing
- Pelican Lights & Cases
- Pelsue
- Plastic Techniques
- Polywater
- Porter Cable
- Power Team (Hydraulics)
- Quicktape
- Ratcliff
- Reel Thing
- Reliable
- Rigid
- Ripley Company
  - Utility Tool
  - Cablematic
  - Miller
  - Abeco
- S&C Load Break Parts
- Sensorlink
- Salisbury / North
- Safety Line
- Sherman & Riley
- Skil
- Speed Systems
- Stanley Hydraulic
- Stihl
- StreamLight
- Tanaka
- T & B
- Thor
- Timco Instruments
- U.K. Lighting
- W.H. Salisbury
- White Rubber
- Workrite
- Many Other Manufacturers of Utility Tools



## Procedures For Testing Rubber Protective Equipment

Rubber Protective Equipment Will Be:

- Washed and dried
- Inflated during inspection (gloves/sleeves)
- Internally and externally dusted with powder
- Packed and returned, according to owners instructions
- Stamped with date tested, re-test date\* and test voltage
- Visually inspected under a magnifying glass for mechanical damage
- Tested dielectrically according to current ASTM Specifications at the requested voltage\*\*



\* Only as required by law or requested by customer    \*\* Not to exceed the rated voltage

## After Testing

- Rejected goods will be rendered unusable and returned to owner upon request.
- Our service includes automatic replacement of failed gloves if requested.
- Customer supplies shipping container and pays shipping costs both ways, unless other arrangements are made.
- Reasonable changes to these procedures may be made upon written request.

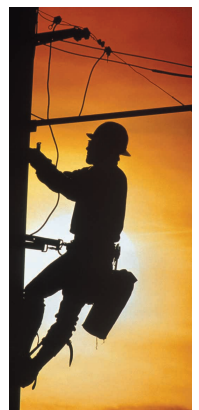
## Reasons For Rejection

Gloves and Sleeves

- Holes and punctures.
- Breakdown during dielectric testing
- Corona cutting, serious damage or cutting anywhere on gloves or sleeves.
- Excess milliamp leakage during dielectric test in accordance with ASTM / OSHA Specifications.

Hoses Hoods and Blankets

- Serious corona cuts, scrapes, punctures or deep gouges or breakdown during dielectric test. Please call or email for testing prices.



*Rohlinger Enterprises provides safe clean, dry storage of customer's spare rubber protective equipment upon request. We also will store single gloves or sleeves that pass the test for future matching to create complete pairs.*